

Councilors and Officials

Councilors

IHARA Ichiro	Vice-President, Chubu Electric Power Co., Inc.
MASUI Hideki	President, Japan Atomic Industrial Forum, Inc.
MIZUTA Hitoshi	Vice-President, The Kansai Electric Power Co., Inc.
NIIBORI Yuichi	Specially Appointed Professor (Research), NanoTerasu Co-Creation Promotion Division, Research Promotion Department, Tohoku University
SATO Seichi	Professor Emeritus, Hokkaido University
SONEDA Naoki	Vice-President, Central Research Institute of Electric Power Industry
TOCHIYAMA Osamu	Technical Adviser, Nuclear Safety Research Association
WAKASUGI Takaaki	Co-director, Mitsui Life Financial Research Center of Ross Business School at University of Michigan / Professor Emeritus, The University of Tokyo
YAMAGUCHI Akira	President, Nuclear Waste Management Organization of Japan
YANO Shinichiro	Vice-President, Japan Atomic Energy Relations Organization

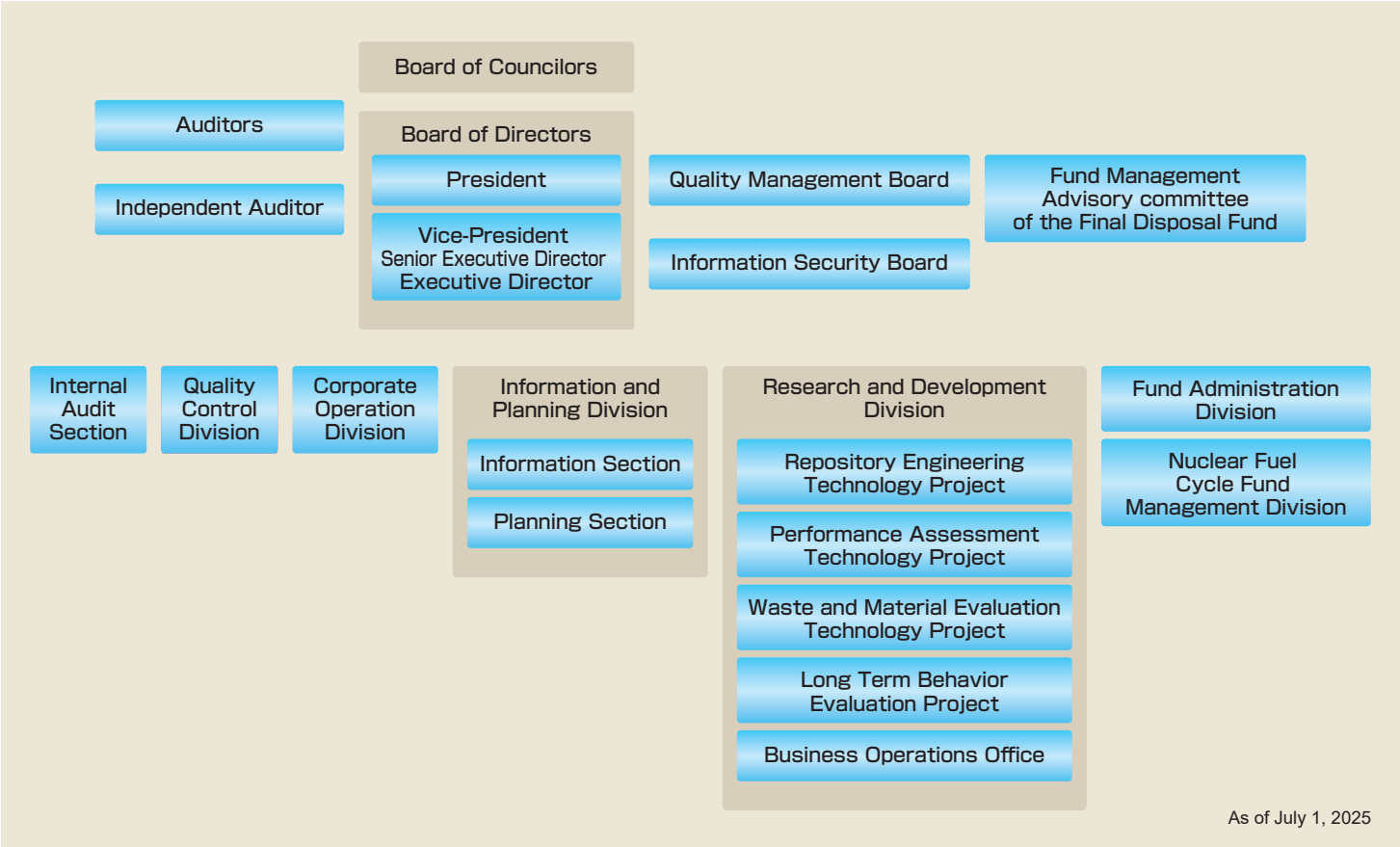
As of July 1, 2025

Officials

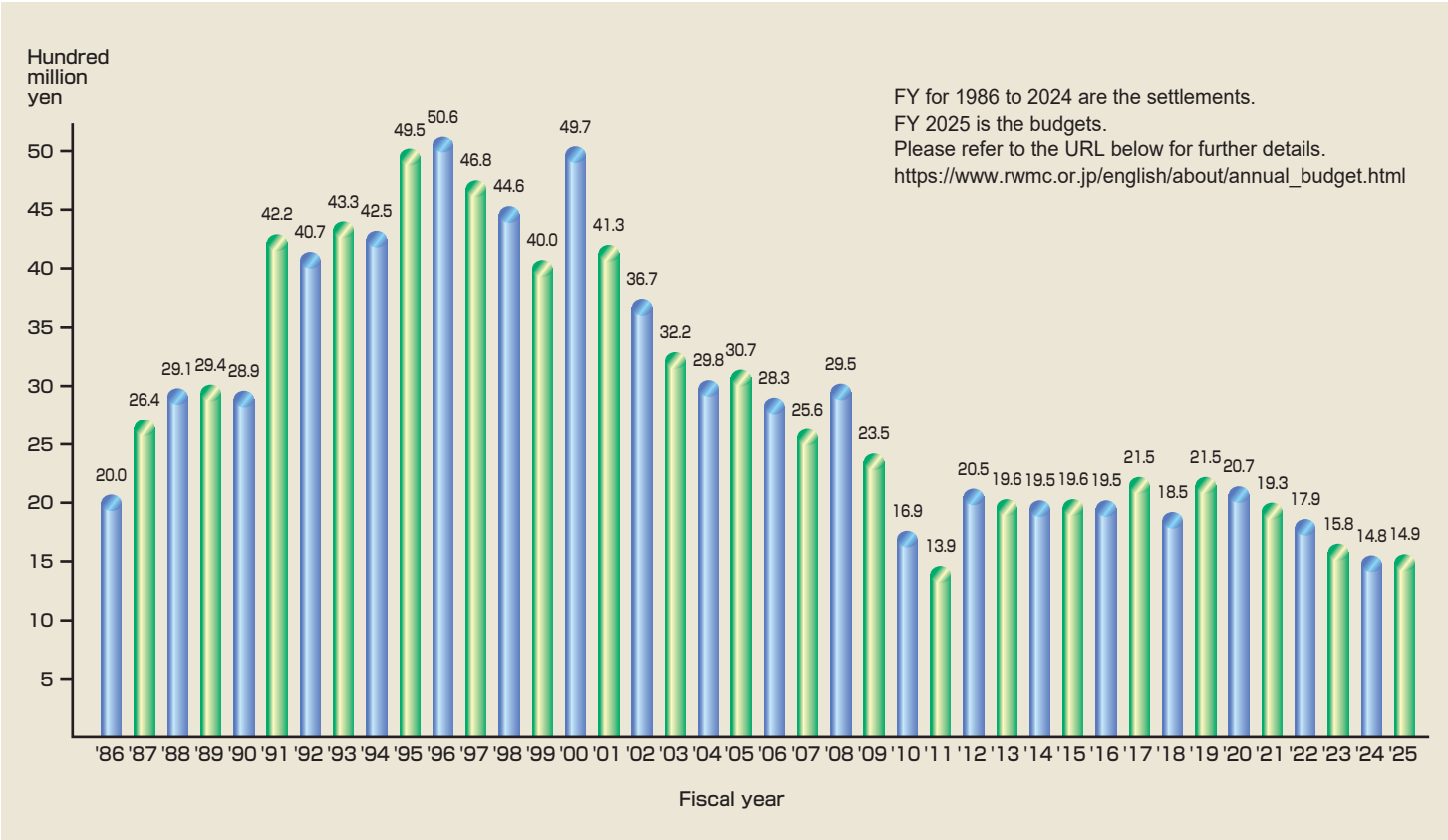
President (full time)	TAKETANI Noriaki	
Vice-President (full time)	FUCHIGAMI Yoshihiro	
Senior Executive Director (full time)	NISHIKAWA Shinya	
Executive Directors (part time)	ANDO Yasushi	Ex-Vice-Chairman, The Federation of Electric Power Companies of Japan
	HARADA Kiyoaki	Certified Public Accountant
	IDEMITSU Kazuya	Specially Appointed Professor, International Research Center for Nuclear Materials Science Institute for Materials Research, Tohoku University
	NAGASATO Yoshihiko	Executive Director, Japan Atomic Energy Agency
	NAKAJIMA Tetsuya	President, The Japan Electrical Manufacturers' Association
	NISHIGAKI Makoto	Professor Emeritus, Okayama University
	TORII Hiroyuki	Ex-Professor, Tokyo Institute of Technology
Auditor (full time)	NOMOTO Takeshi	
Auditor (part time)	MURAMATSU Mamoru	President, The Japan Atomic Power Company

As of July 1, 2025

Organization



Annual Budget(Research and Development Division)



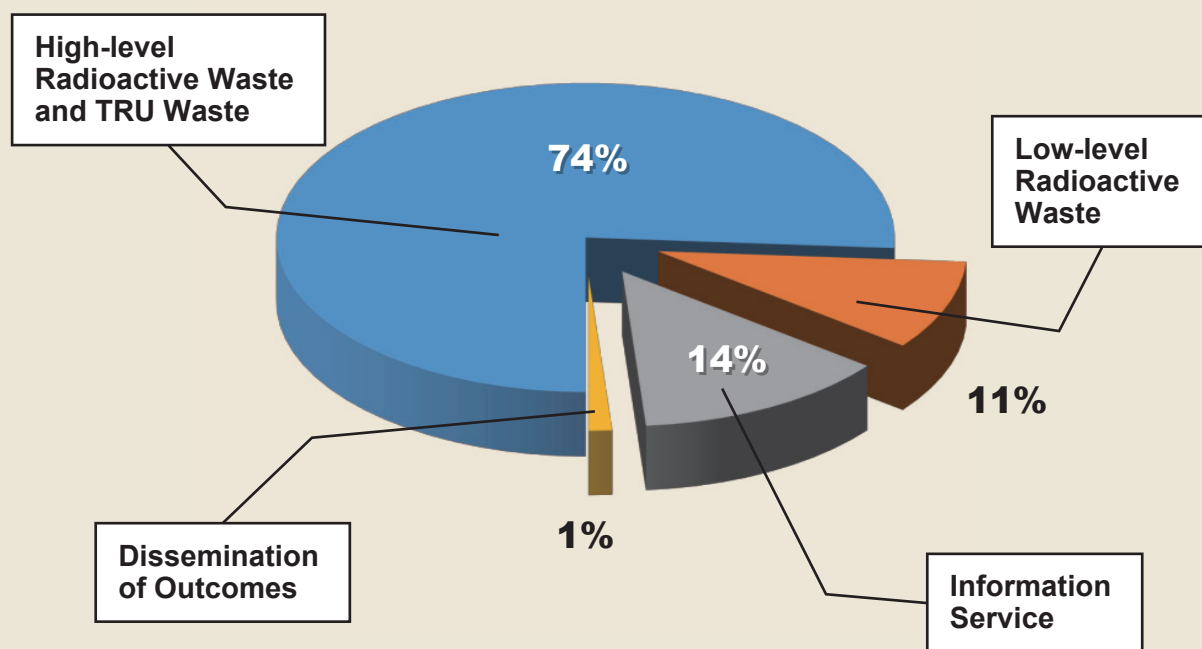
Activities in FY2024 (Research and Development Division)

- In FY2024, we conducted 22 research and development works for management of all categories of radioactive waste. Sixteen of them were conducted with external funds (Seven from Ministry of Economy, Trade and Industry (METI), eight from the electric utilities and others).
- For dissemination of outcomes and information on radioactive waste management, we conducted organization of lectures・seminars, release of the newest information through our website, publication of RWMC topics and RWMC annual technical report, and contributions to academic conferences and journals.
- We performed information exchange with foreign implementing bodies and research institutes on research and development, safety regulations and standards, and situation of repository programs under the collaboration agreements.

France-ANDRA, Switzerland-NAGRA, Finland-Posiva Oy and Posiva Solutions Oy, Sweden-SKB/SKB International, Germany-BGE and BGE Technology, Spain-ENRESA, Belgium-SCK CEN, UK-NDA, Korea-KORAD, China-CNNC/CNUC, Taiwan-NuSTA, Korea-KAERI

(As of July 1, 2025)

Settlement Distribution by Research Area in FY2024 (Research and Development Division)



Total Settlement in FY2024
1,503 million yen

Performance of Fund Administration

1-1 Balance of the TypeI Final Disposal Fund

(unit: million yen)

	The End of FY2023	FY2024 (Result)			FY2025 (Plan)		
		Increase	Decrease	The End of FY2024	Increase	Decrease	The End of FY2025
Reserved	1,139,850	64,745		1,204,595	67,794		1,272,389
Reimbursement	98,522		6,842	105,364		10,461	115,825
Interest, etc.	165,069	3,974		169,044	5,224		174,268
Total	1,206,398	68,719	6,842	1,268,275	73,018	10,461	1,330,832

"Type I" is for final disposal of HLW.

"Reimbursement" means the amount paid back to NUMO.

"Increase" includes NUMO's re-reserve.

"Interest, etc." includes interest receivable.

1-2 Portfolio of the TypeI Final Disposal Fund

As of March 31, 2025

		Book Value (M¥)	BV Ratio	Face Value (M¥)	Ave. Coupon	Yield
B O N D S	Government	640,398	54.0%	638,300	0.36%	0.30%
	Government Guaranteed	111,440	9.4%	111,500	0.34%	0.39%
	Local Government	181,510	15.3%	181,600	0.26%	0.29%
	Corporate, etc.	251,700	21.3%	251,700	0.41%	0.41%
	Total	1,185,049	100.0%	1,183,100	0.36%	0.33%
Deposit		82,716				0.20%
Total Balance		1,268,275				

"Corporate, etc." includes FILP Agency Bonds.

Maturity of the bonds is mainly 10 years.

"Total Balance" includes interest accrued and receivable.

1-3 Balance of the TypeII Final Disposal Fund

(unit: million yen)

	The End of FY2023	FY2024 (Result)			FY2025 (Plan)		
		Increase	Decrease	The End of FY2024	Increase	Decrease	The End of FY2025
Reserved	100,859	8,241		109,101	8,134		117,235
Reimbursement	18,013		1,836	19,849		2,799	22,648
Interest, etc.	929	154		1,084	360		1,444
Total	83,776	8,396	1,836	90,337	8,494	2,799	96,032

"Type II" is for final disposal of TRU waste in geological repository.

"Reimbursement" means the amount paid back to NUMO.

"Increase" includes NUMO's re-reserve.

"Interest, etc." includes interest receivable.

1-4 Portfolio of the TypeII Final Disposal Fund

As of March 31, 2025

		Book Value (M¥)	BV Ratio	Face Value (M¥)	Ave. Coupon	Yield
B O N D S	Government	29,919	38.2%	29,900	0.34%	0.31%
	Government Guaranteed					
	Local Government	33,798	43.1%	33,800	0.05%	0.06%
	Corporate, etc.	14,700	18.7%	14,700	0.40%	0.40%
	Total	78,417	100.0%	78,400	0.22%	0.22%
Deposit		11,898				0.20%
Total Balance		90,337				

"Corporate, etc." includes FILP Agency Bonds.

Maturity of the bonds is 5 years.

"Total Balance" includes interest accrued and receivable.